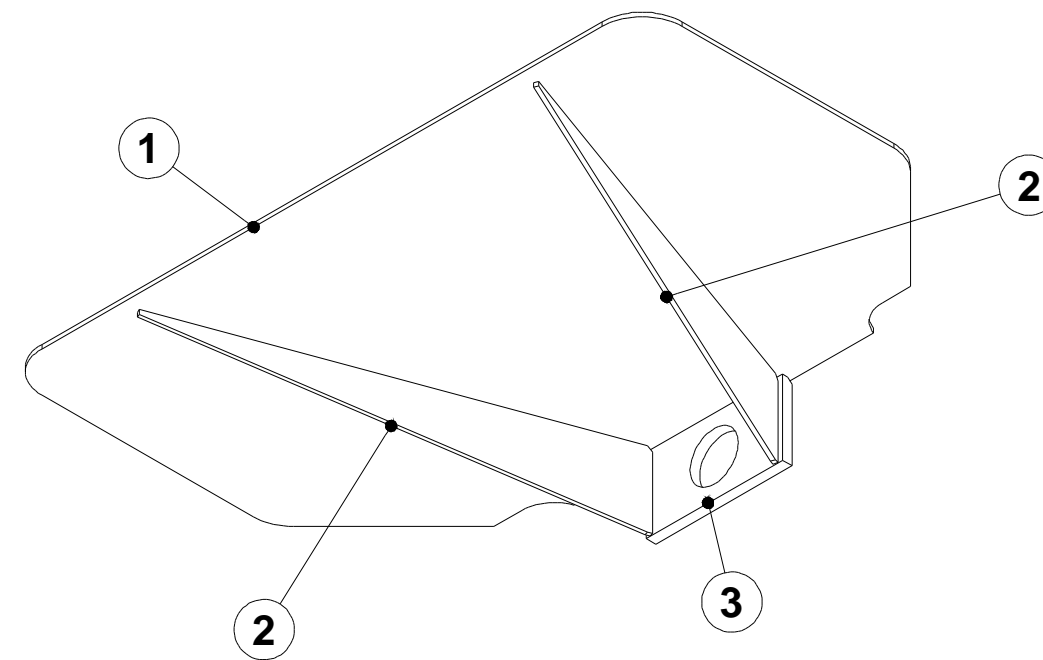
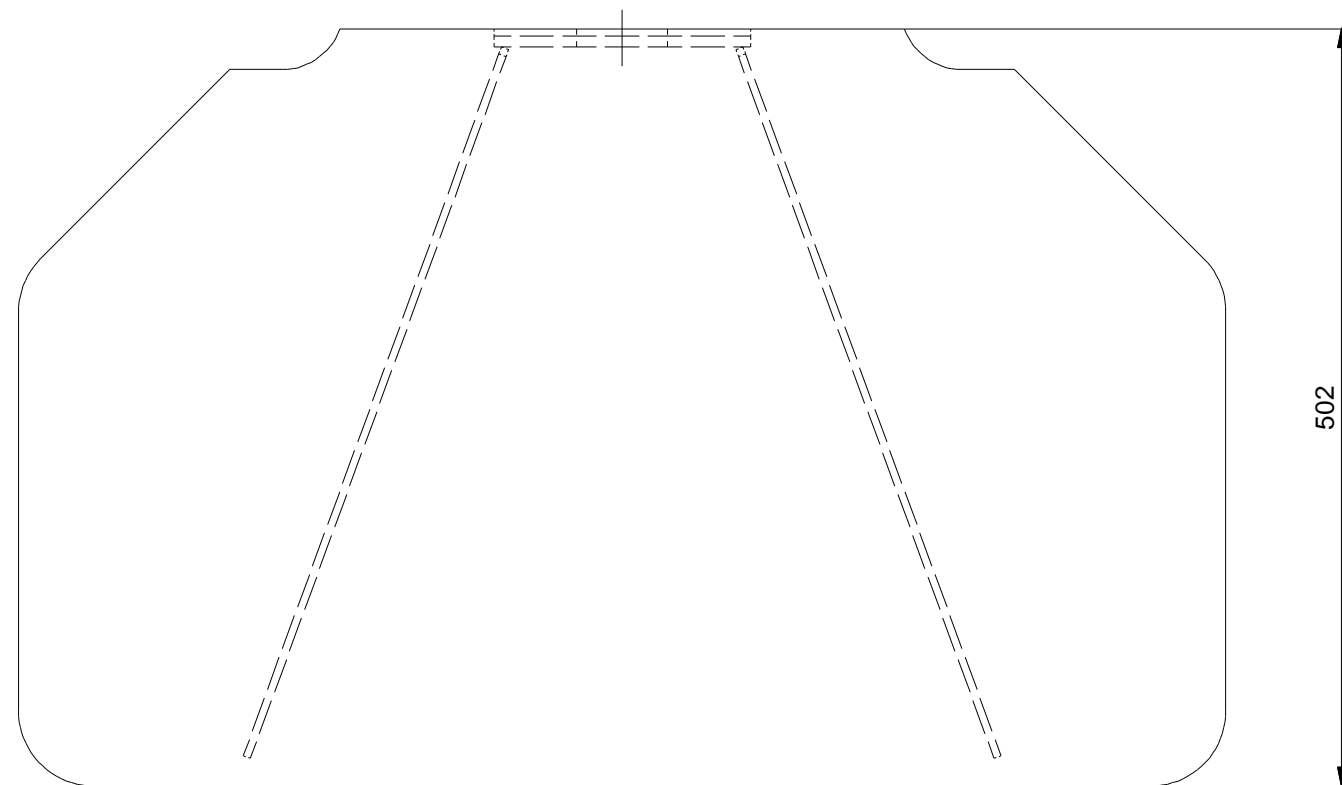
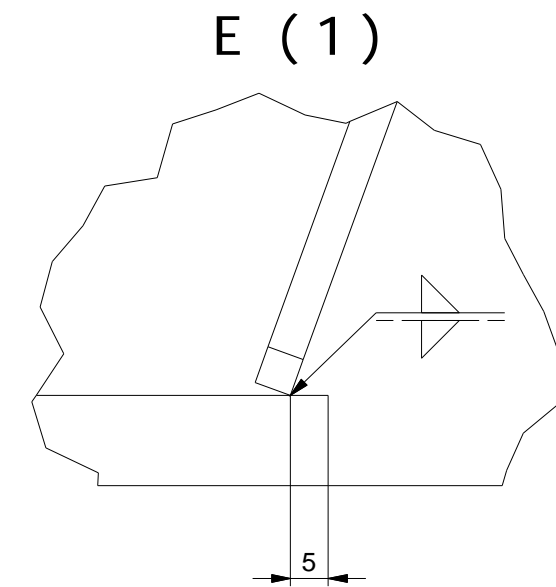
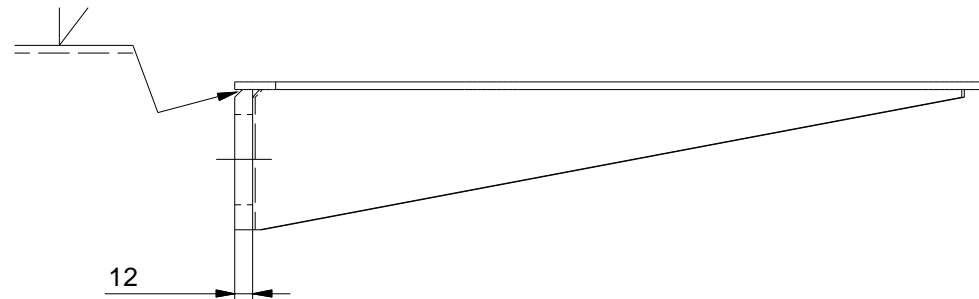
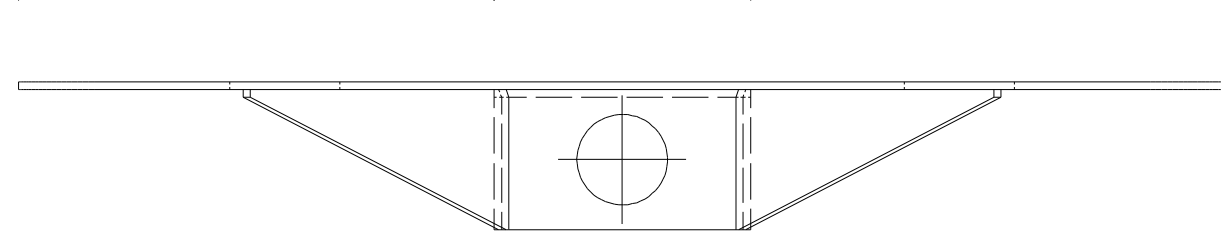
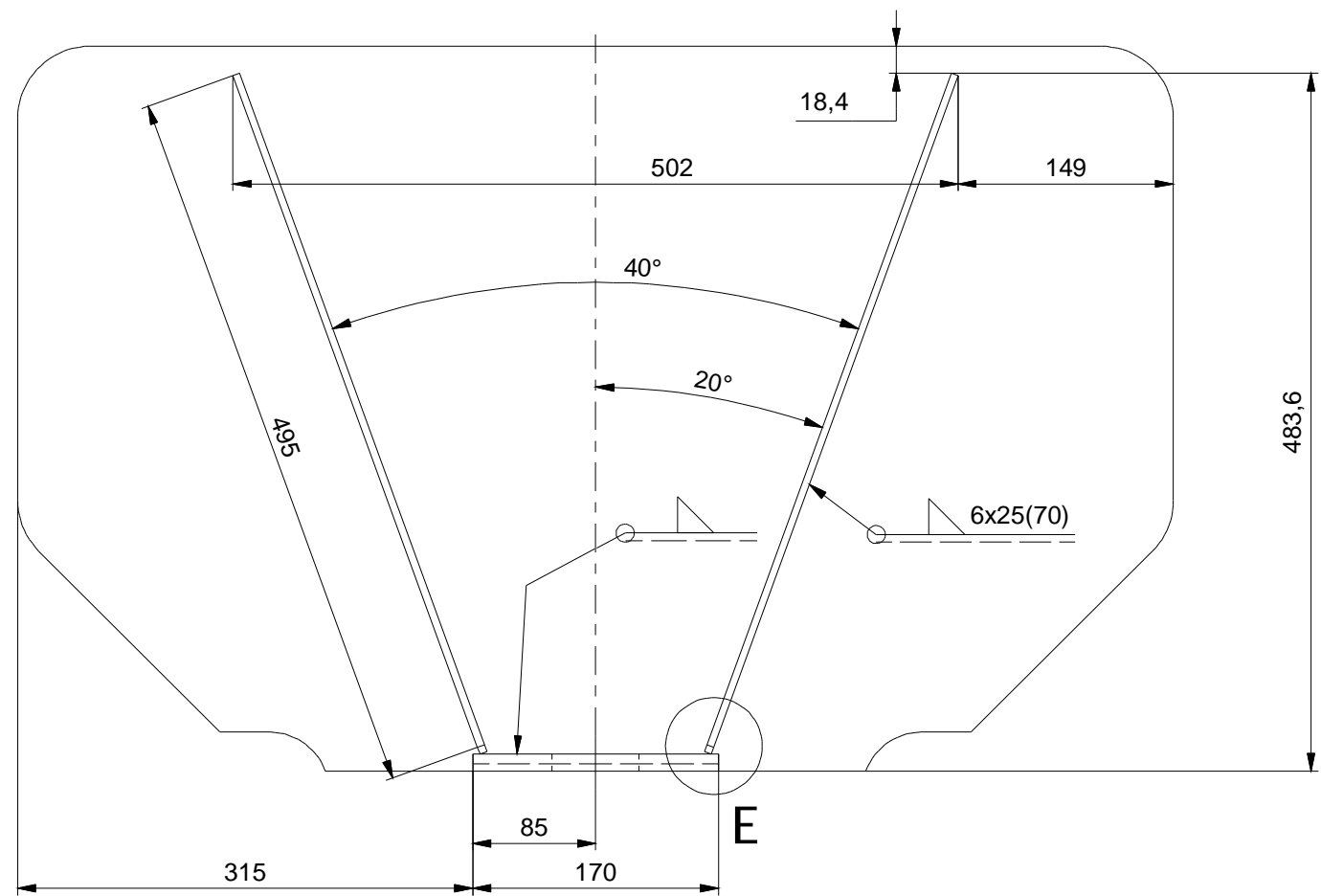


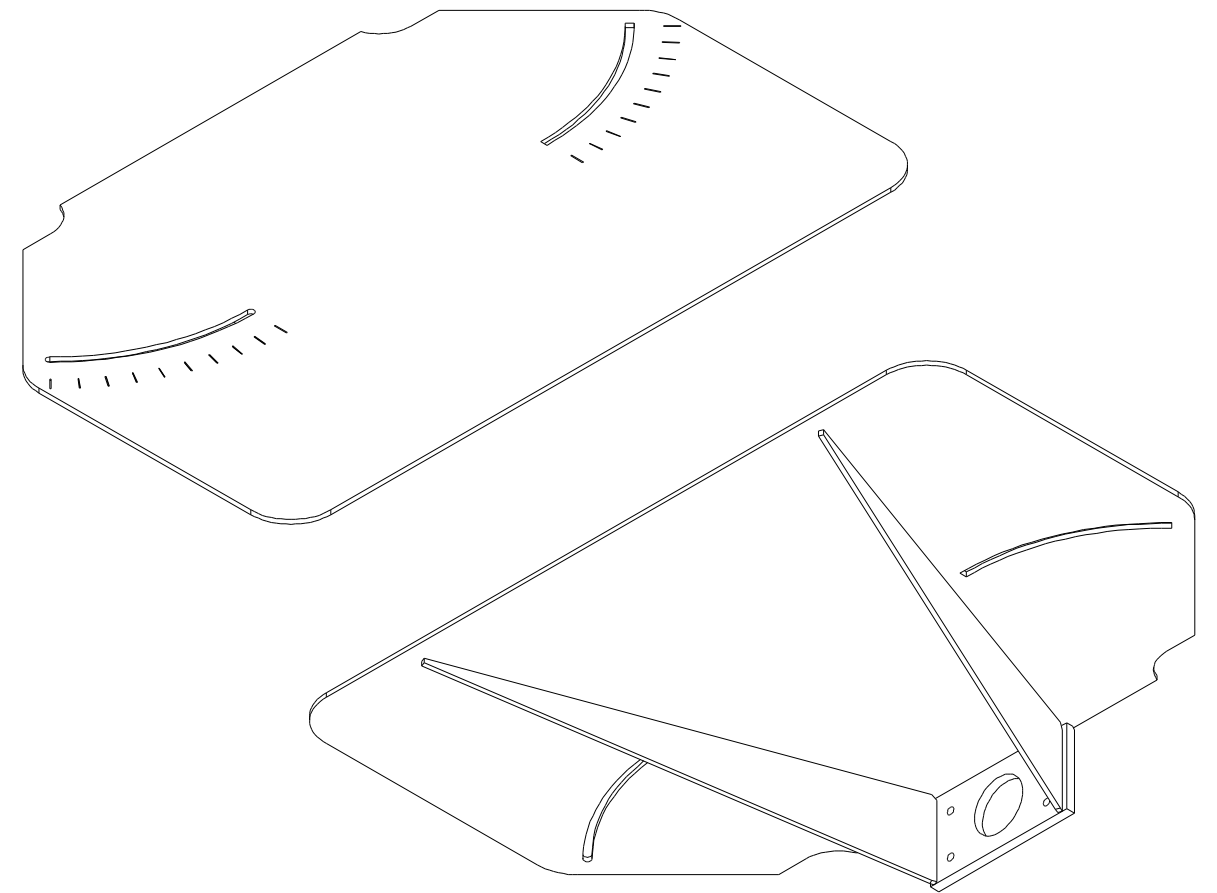
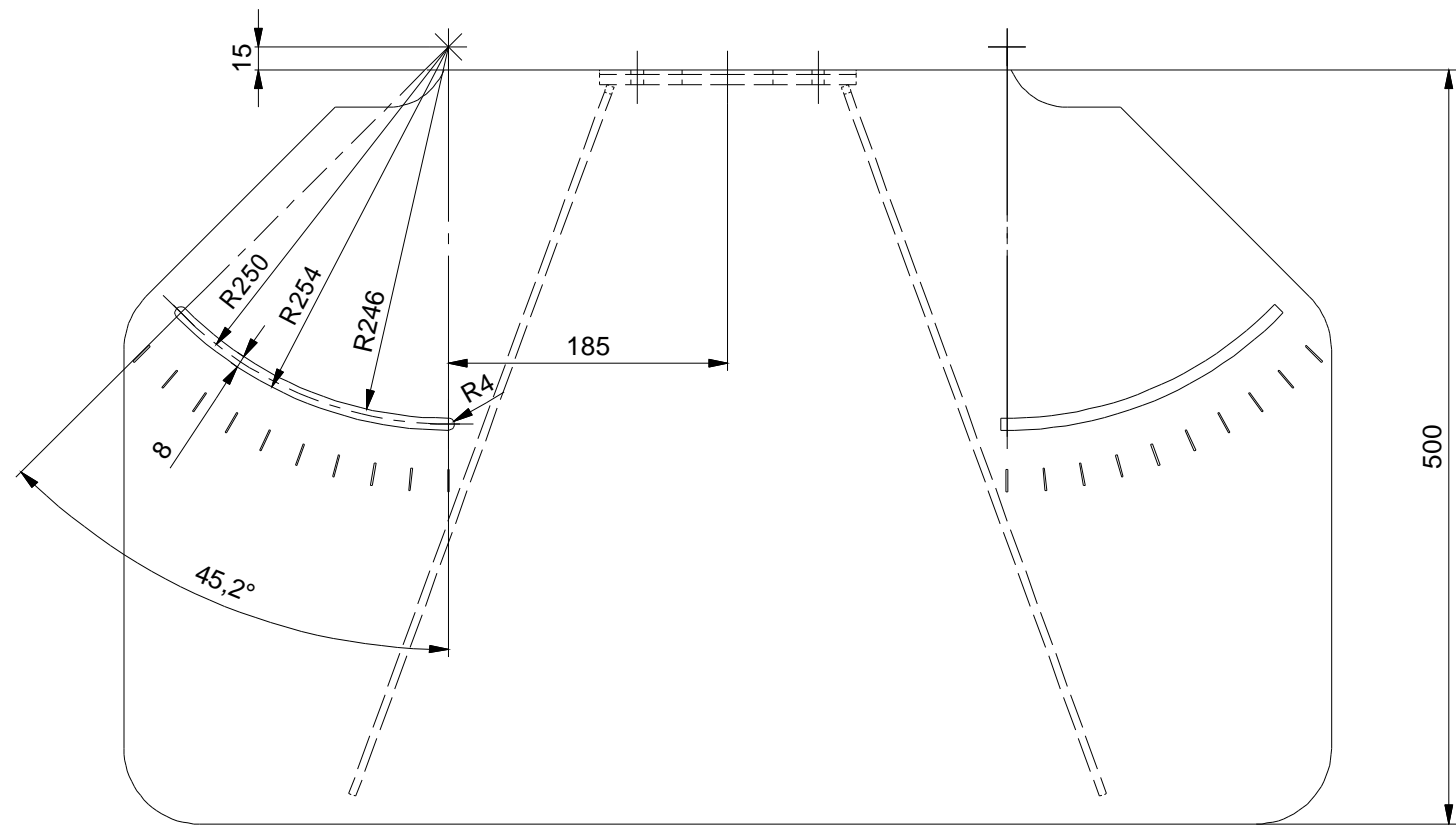
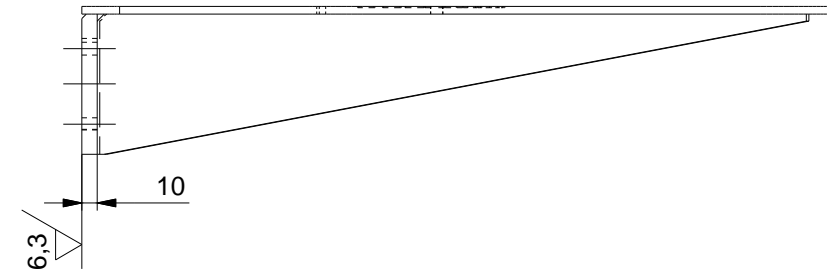
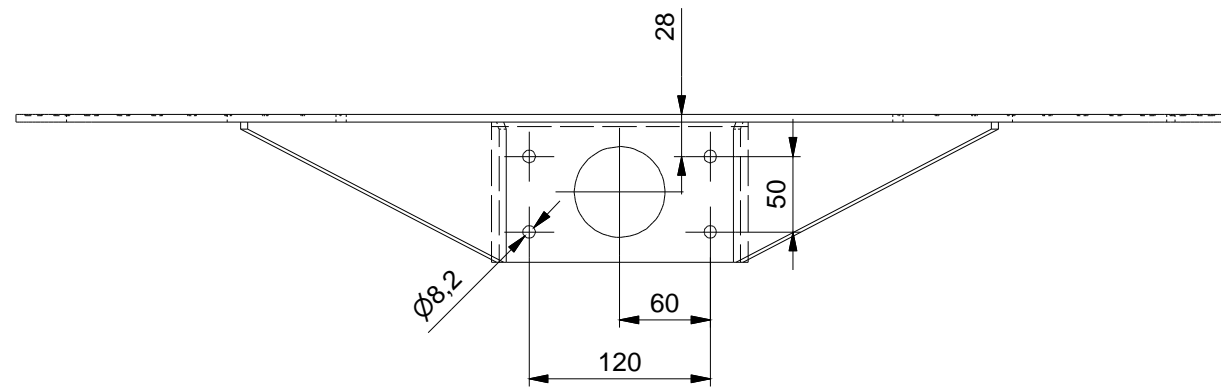
CELKOVA VAHA 32,9 kg

Kusovník							
poz	ks	nazev	popis	norma	material	vaha	cislo vykresu
1	1	Cutting machine for block of wood II				26,54	1
2	1	TABLE				6,06	2
3	1	TABLE ANGLE				0,09	3
4	1	TABLE ANGLE_MIR			AL (ENAW6060 T66)	0,09	4
5	2	ISO 4762 - M6 x 10	Imbus	ISO 4762	8.8	0,01	
6	4	ISO 4762 - M8 x 55	Imbus	ISO 4762	8.8	0,03	
7	4	ISO 4032 - M8	Normální šestihránná matice	ISO 4032	8	0,01	
8	8	ISO 7089 - 8 - 140 HV	Podložka obyčejná	ISO 7089	-	0	
Kreslil:			Ing. Radim Jurečka		nazev		
jirka ohnutek			Kpt. Nálepky 1071 Kopřivnice 742 21 IČO: 73331112 DIČ: CZ6712202046		Assembly Cutting machine for block of wood II		
cislo vykresu				format	datum	vydani	list
				A3	18.1.2008		1 / 8



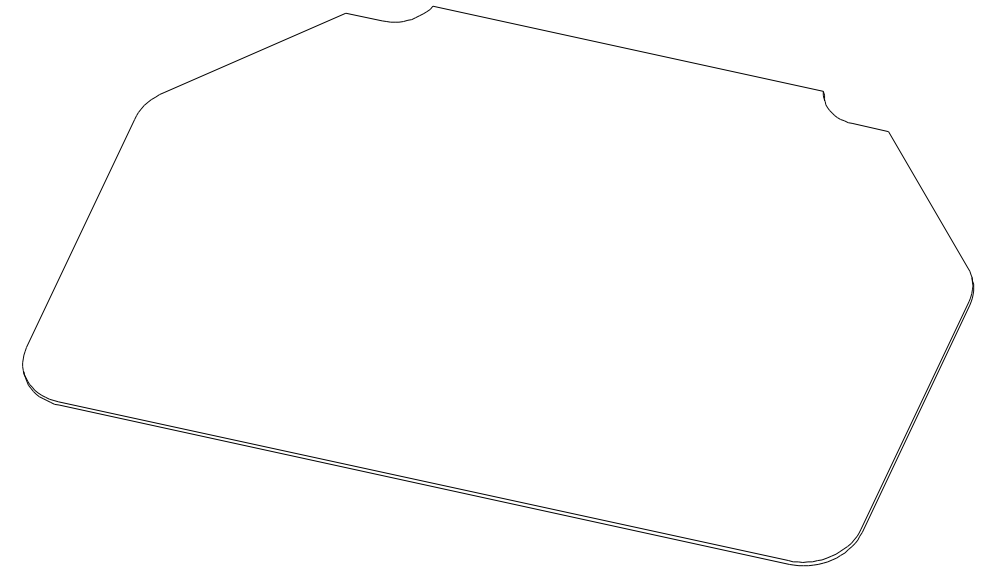
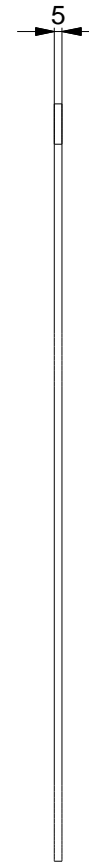
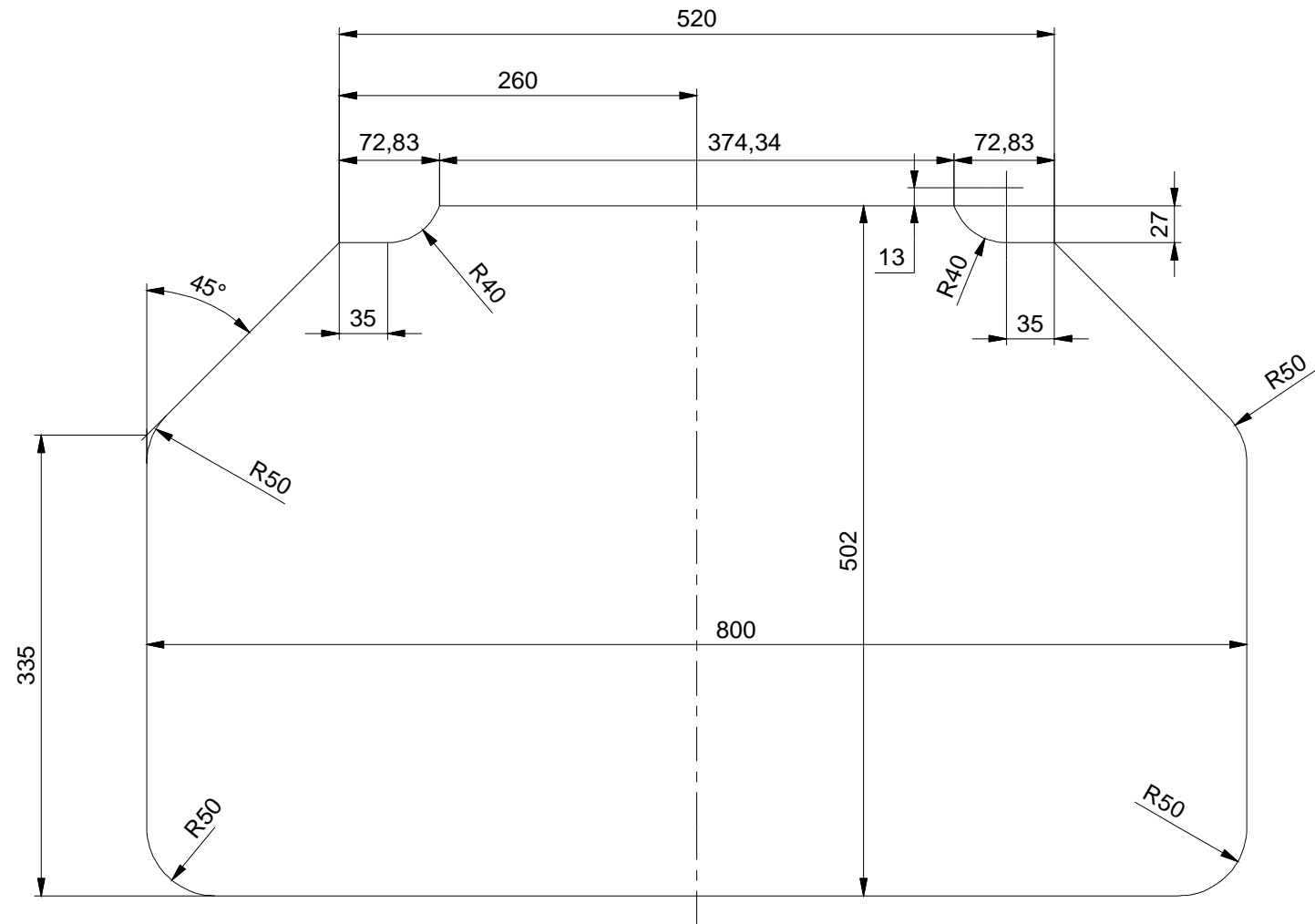
VYKRES PRO SVARENI (WELDING)

Kusovník							
poz	ks	nazev	popis	norma	material	vaha	cislo vykresu
1	1	TABLE 1			AL (ENAW6060 T66)	5,09	2_1
2	2	TABLE RIB			AL (ENAW6060 T66)	0,34	2_2
3	1	TABLE 2			AL (ENAW6060 T66)	0,42	2_3
Kreslil:		Ing. Radim Jurečka Kpt. Nálepky 1071 Kopřivnice 742 21 IČO: 73331112 DIČ: CZ6712202046		nazev			
jirka ohnutek				TABLE			
		cislo vykresu		2	format	datum	vydani
					A3	21.1.2008	list
							2 / 8



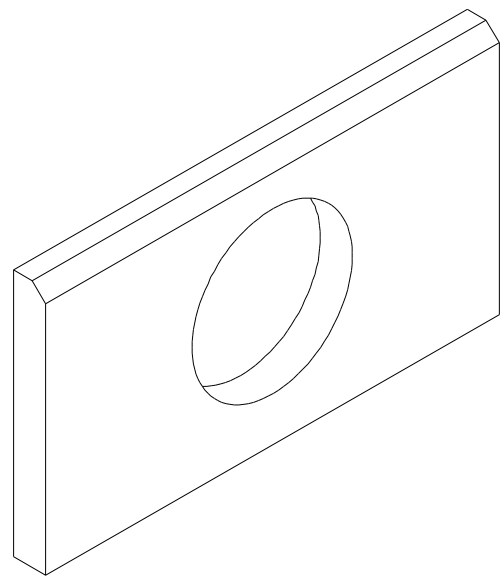
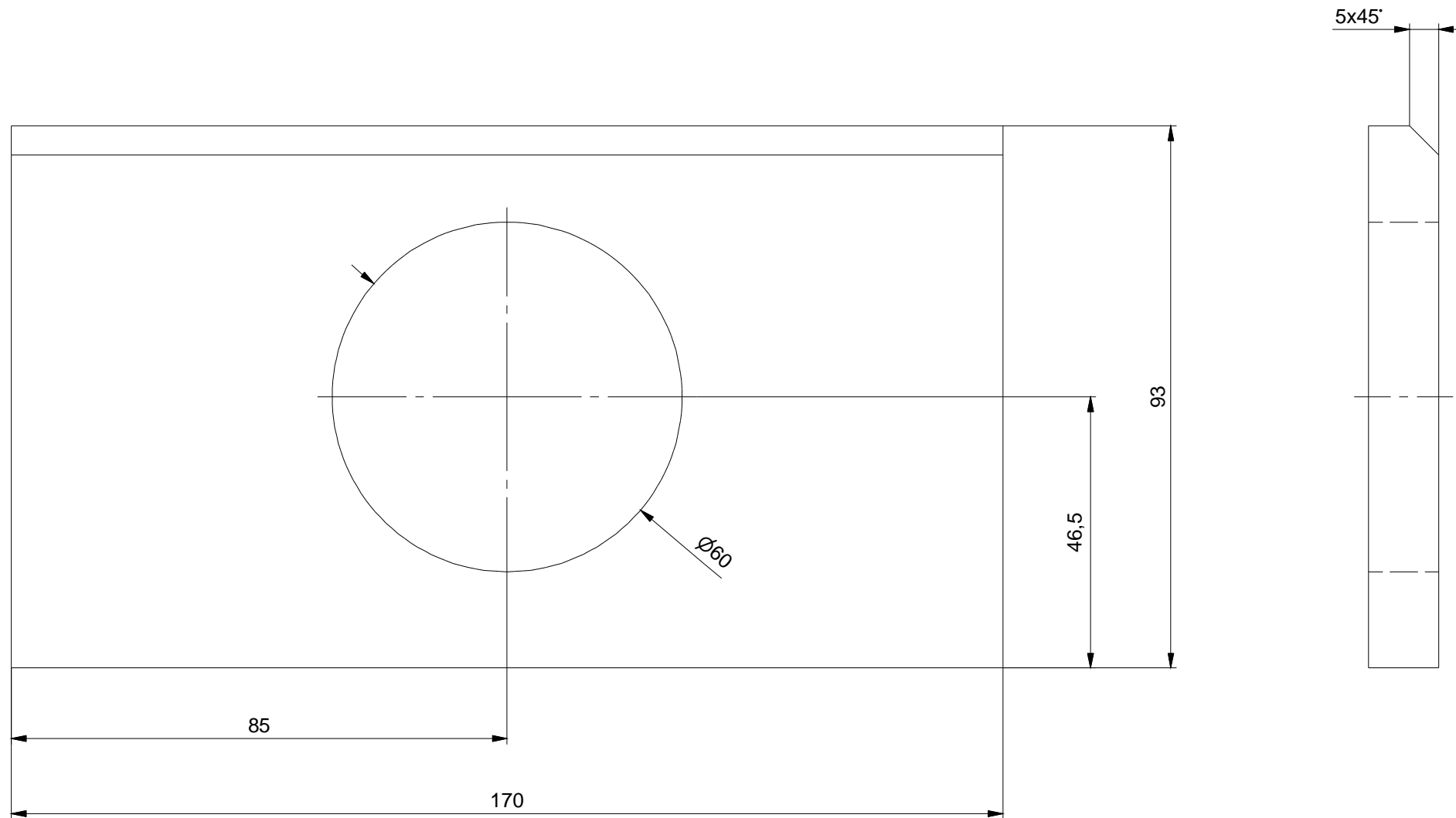
VYKRES PRO OBRABENI (MACHINING)

Kreslil: jirka ohnutek	Ing.Radim Jurečka Kpt.Nálepky 1071 Kopřivnice 742 21 IČO: 73331112 DIČ: CZ6712202046	navez TABLE			
		cislo vykresu 2	format A3	datum 21.1.2008	vydani 3 / 8



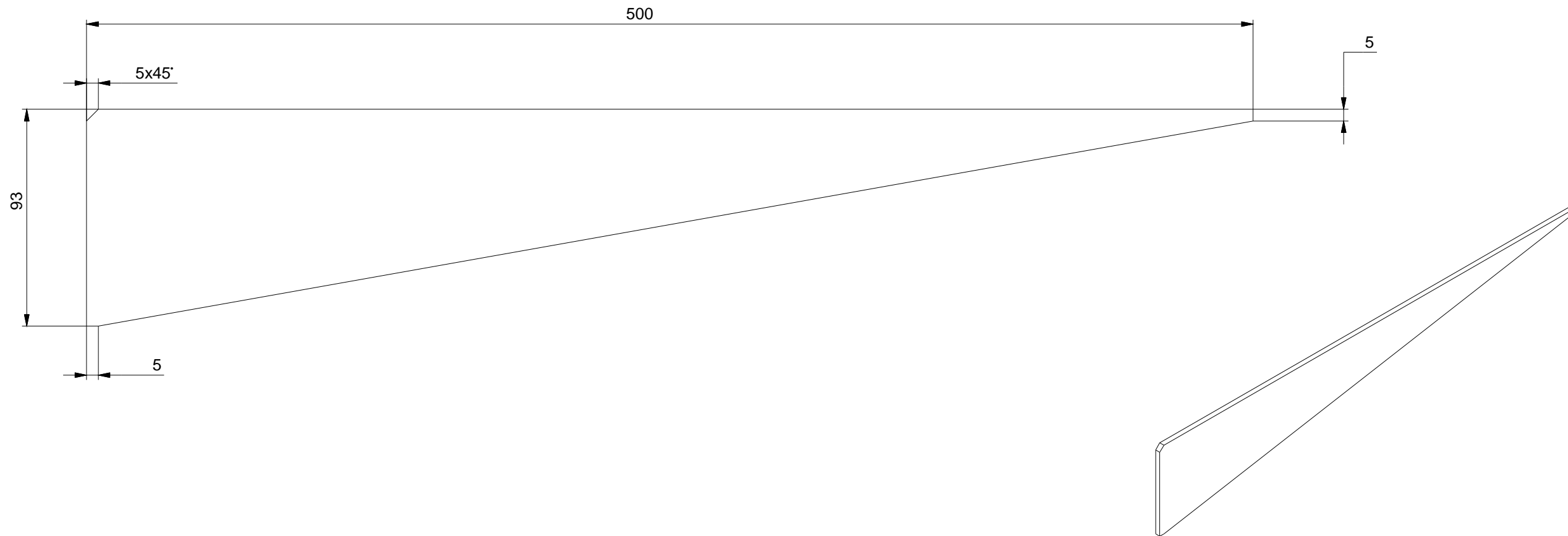
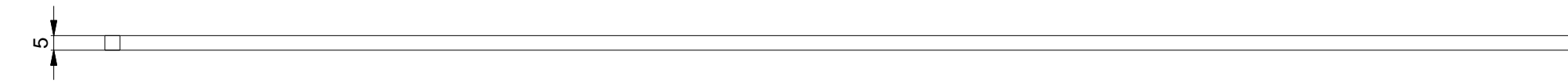
CELKEM 1 KS

Kusovník							
poz	ks	nazev	popis	norma	material	vaha	cislo vykresu
1	1	TABLE 1			AL (ENAW6060 T66)	5,09	2_1
Kreslil:		Ing. Radim Jurečka Kpt. Nálepky 1071 Kopřivnice 742 21 IČO: 73331112 DIČ: CZ6712202046		nazev			
jirka ohnutek				TABLE 1			
		cislo vykresu		format	datum	vydani	list
		2_1		A3	21.1.2008		4 / 8



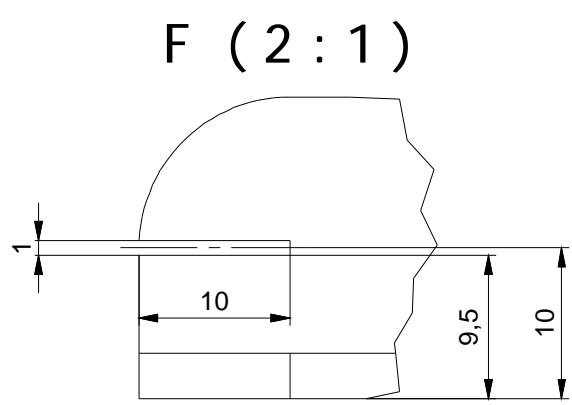
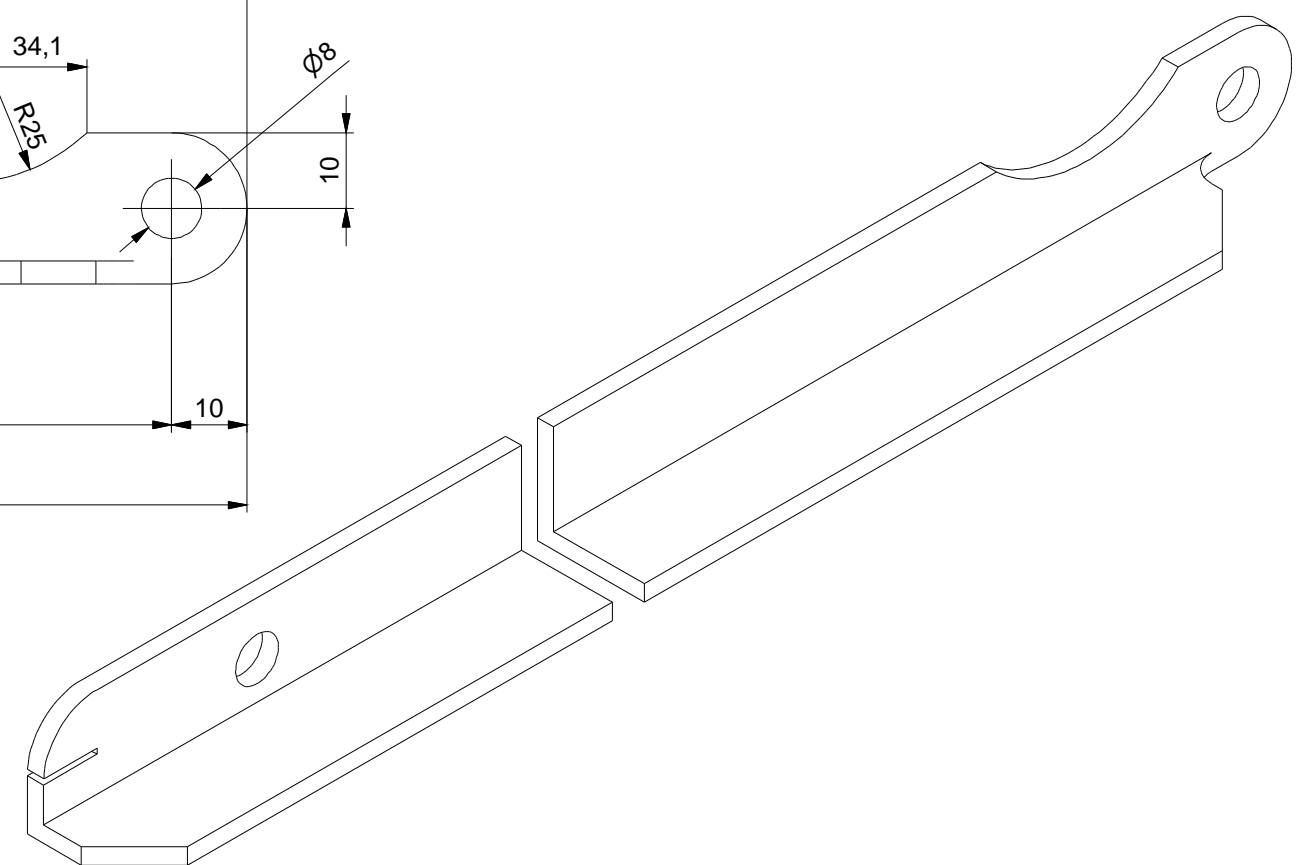
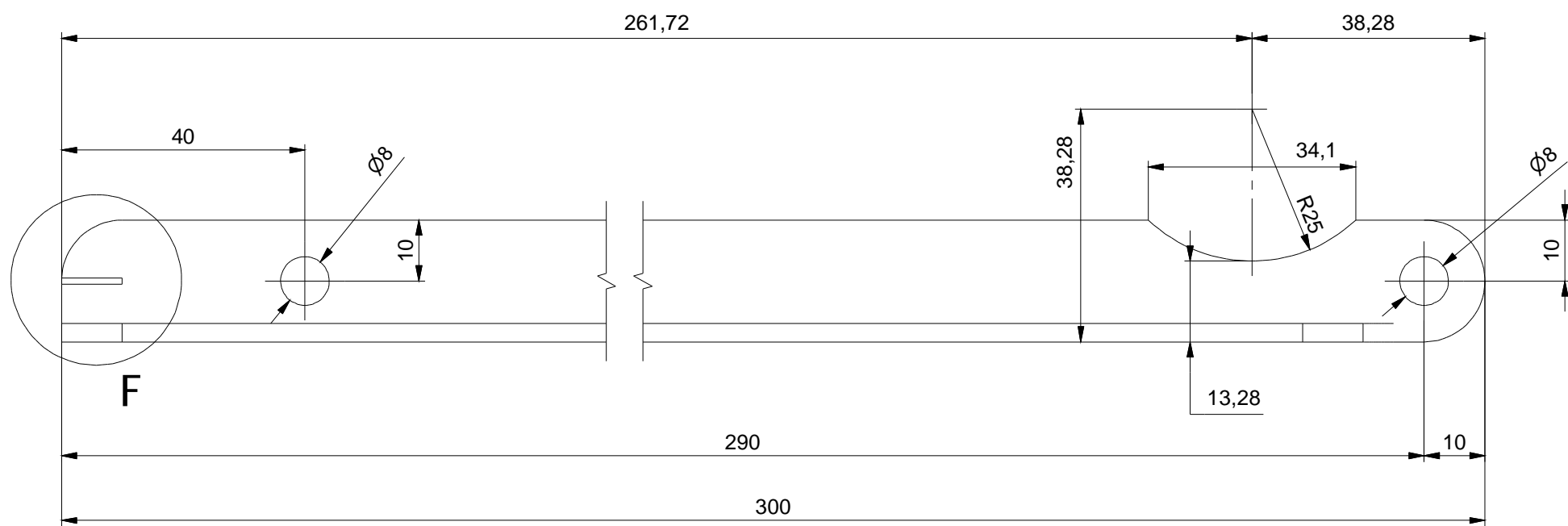
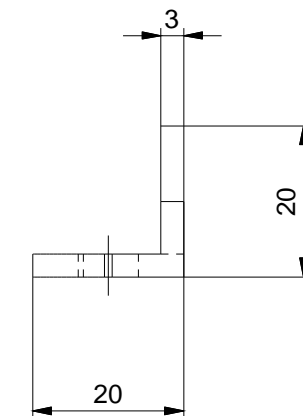
CELKEM 1 KS

Kusovník								
poz	ks	nazev	popis	norma	material	vaha	cislo vykresu	
1	1	TABLE 2			AL (ENAW6060 T66)	0,42	2_3	
Kreslil:		Ing. Radim Jurečka Kpt. Nálepky 1071 Kopřivnice 742 21 IČO: 73331112 DIČ: CZ6712202046		nazev TABLE 2				
		jirka ohnutek		cislo vykresu 2_3		format A3	datum 21.1.2008	vydani 5 / 8



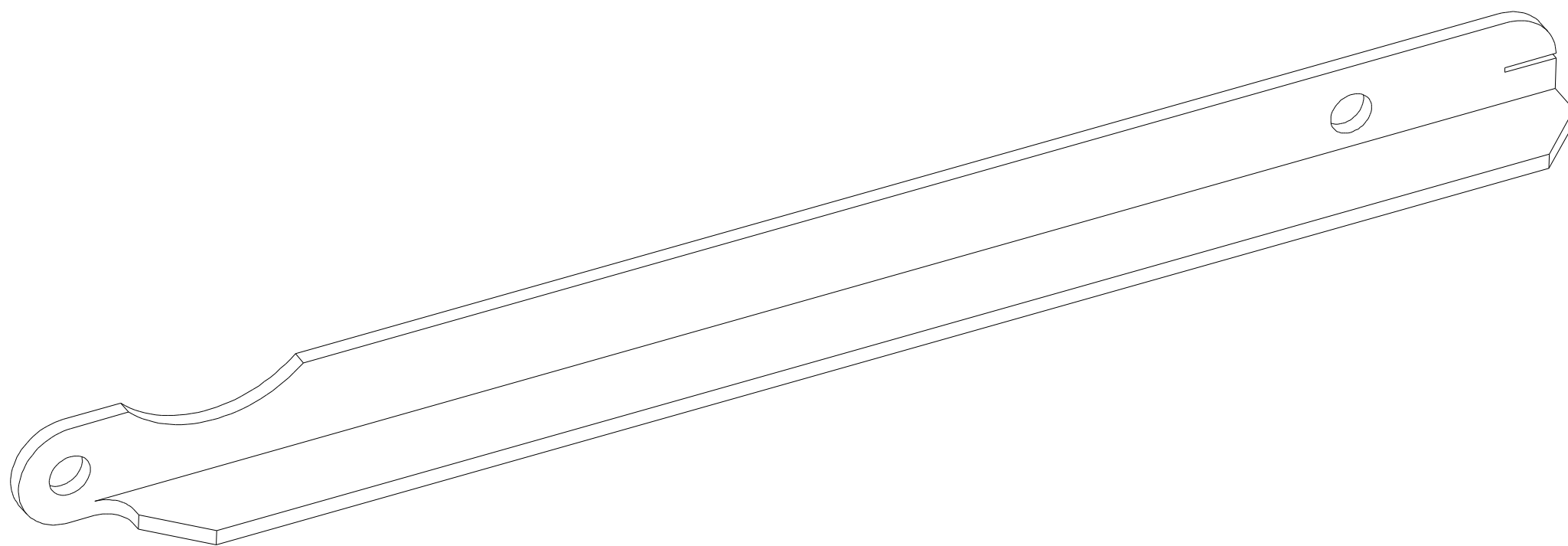
CELKEM 2 KS

Kusovník							
poz	ks	nazev	popis	norma	material	vaha	cislo vykresu
1	1	TABLE RIB			AL (ENAW6060 T66)	0,34	2_2
Kreslil:		Ing. Radim Jurečka Kpt. Nálepky 1071 Kopřivnice 742 21 IČO: 73331112 DIČ: CZ6712202046		nazev TABLE RIB			
jirka ohnutek				cislo vykresu	2_2	format A3	datum 21.1.2008
				vydani		list	6 / 8



CELKEM 1 KS

Kusovník							
poz	ks	nazev	popis	norma	material	vaha	cislo vykresu
1	1	TABLE ANGLE			AL (ENAW6060 T66)	0,09	3
Kreslil:		Ing. Radim Jurečka Kpt. Nálepky 1071 Kopřivnice 742 21 IČO: 73331112 DIČ: CZ6712202046		nazev			
jirka ohnutek				TABLE ANGLE			
		cislo vykresu		3	format	datum	vydani
					A3	21.1.2008	list
							7 / 8



ZRCADLO

Kusovník								
poz	ks	nazev	popis	norma	material	vaha	cislo vykresu	
1	1	TABLE ANGLE_MIR			AL (ENAW6060 T66)	0,09	4	
Kreslil: jirka ohnutek			Ing.Radim Jurečka Kpt.Nálepky 1071 Kopřivnice 742 21 IČO: 73331112 DIČ: CZ6712202046		nazev TABLE ANGLE_MIR			
				cislo vykresu	4	format A3	datum 21.1.2008	vydani 8 / 8